



Questions with Answers

BAM Construction | Higham Lane North Academy



Question –

What items of PPE (Personal Protective Equipment) must be worn on site at all times?

Answer -

5 Point PPE. These are a hardhat, safety boots, hi-vis vest, safety glasses and gloves



Question –

How many bricks are being used on the job all together?

Answer -
205,520



3 GA South Elevation Colour
1:200



4 GA West Elevation Colour
1:200



1 GA North Elevation Colour
1:200



2 GA East Elevation Colour
1:200

Question –

How many PV Panels (solar panels) are being installed on the job?

Answer -

643 Singular panels

Bonus Point –

How many times a year could we boil a kettle with the energy that these produce?

Answer –

760,000



Question –

How many tonnes of concrete will go into only the ground floor and foundations?

Answer –

3000 tonnes

(fun fact – That is about as much as 231 double decker buses!)

Bonus point –

What is concrete made of?

Answer -

cement, water & aggregate.



Question –

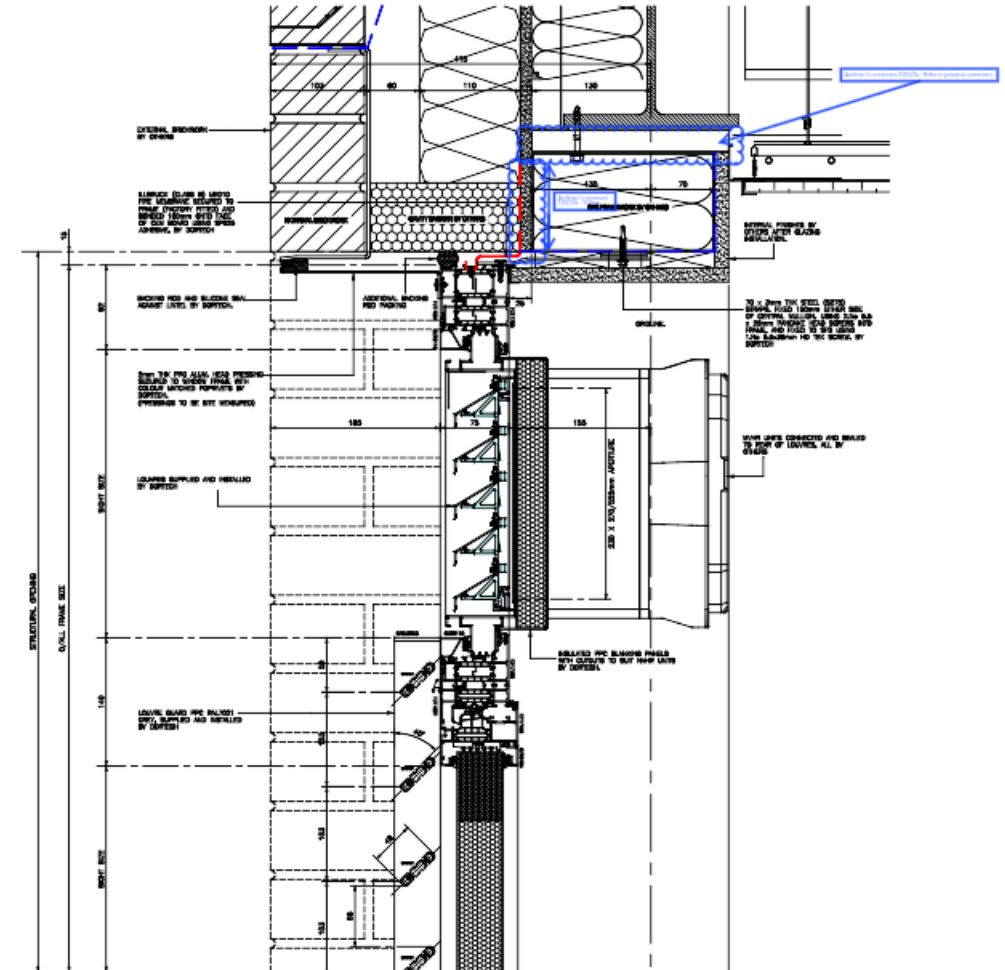
How many windows do we have across the whole project?

Answer -
117

Bonus Point –

What do we receive from the architect that tells us this?

Answer –
Window schedule



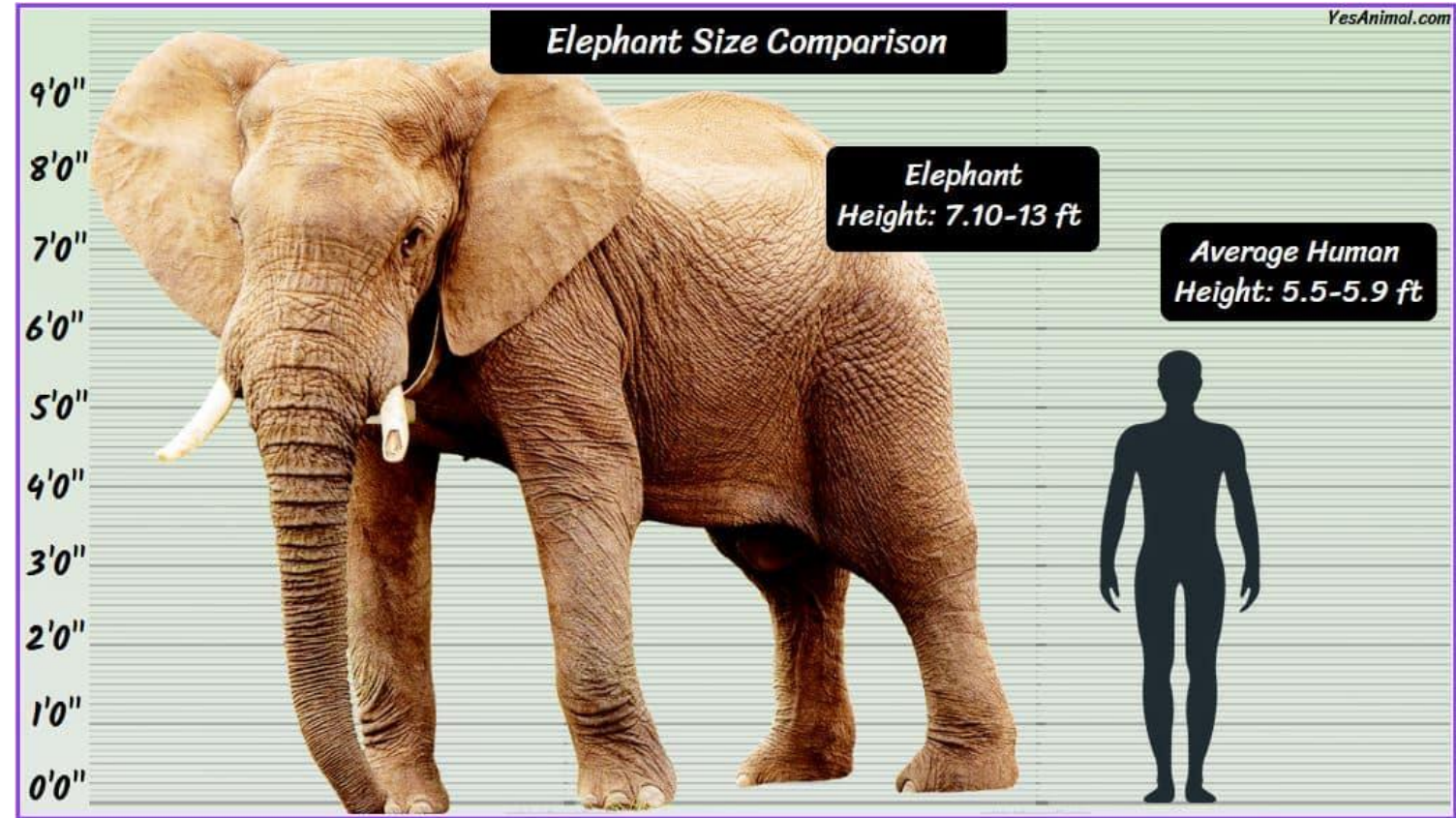
Question –

How many tonnes of steel are in the buildings frame?

Answer -

4356 Tonnes

That is roughly the same as
800 fully grown African
Elephants)



Question –

When did we start our site set-up with the first trades people on site?

Answer -

February 2024



Question –

How many working days do we predict on our programme the site will take to complete?

Answer -
350 days

(Fun Fact – That is less time than a donkey is pregnant for!)

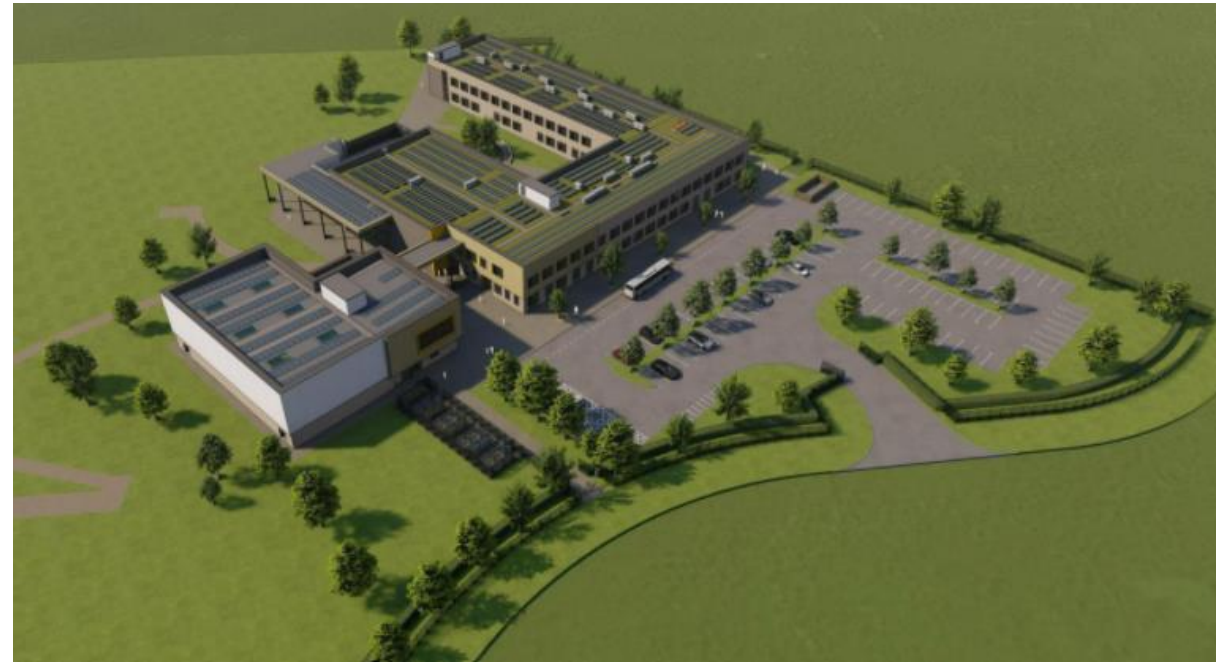


Question –

How many storeys make up Higham Lane North Academy?

Answer -

2 storey building (although the roof is accessible, it doesn't count as a storey.)



Question –

How many pupils could Higham Lane North Academy hold.

Answer -

900

