



Questions

BAM Construction | Higham Lane North Academy

BAM Construction |

Question –

What items of PPE (Personal Protective Equipment) must be worn on site at all times?



Question –

How many bricks are being used on the job all together?



3 GA South Elevation Colour
1:200



4 GA West Elevation Colour
1:200



1 GA North Elevation Colour
1:200



2 GA East Elevation Colour
1:200

Question –

How many P.V Panels (Solar Panels) are being installed on the job?

Bonus Point –

How many times a year could we boil a kettle with the energy that these produce?



Question –

How many tonnes of Concrete will go into only the ground floor and foundations?



Bonus Point –

What is concrete made of?

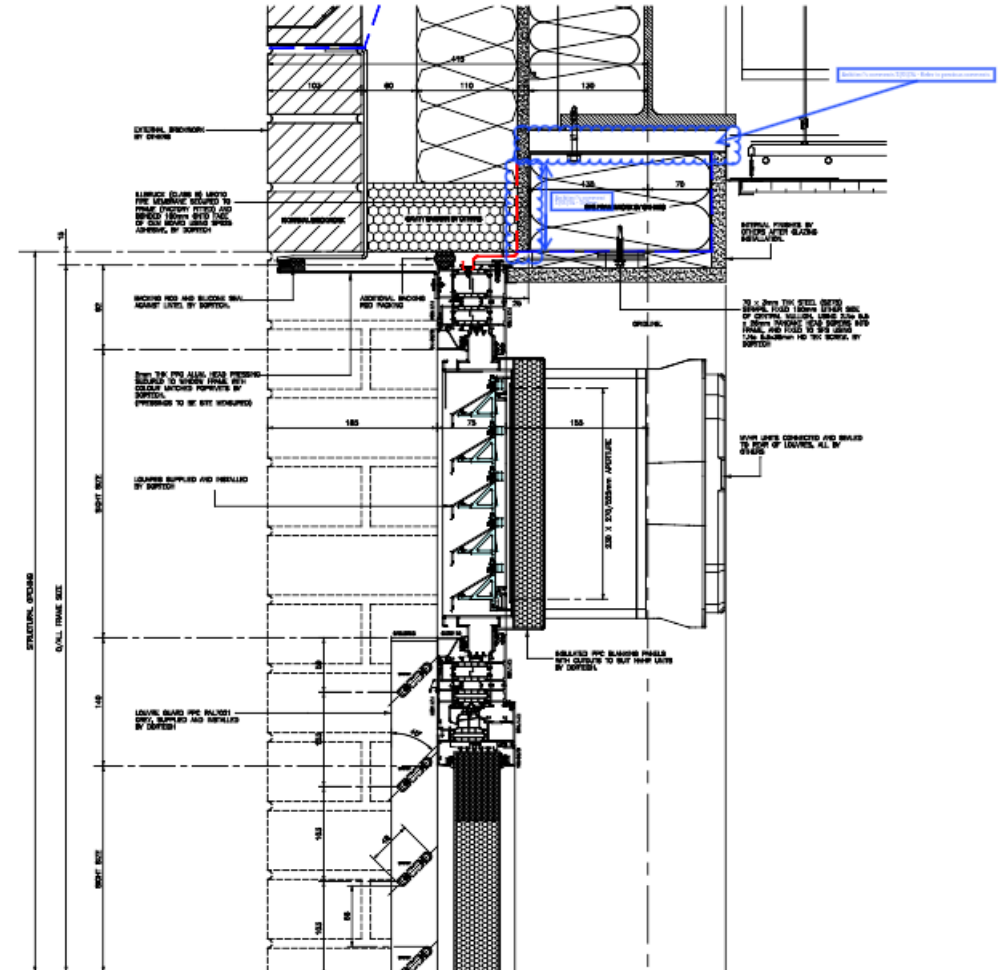


Question –

How many windows do we have across the whole project?

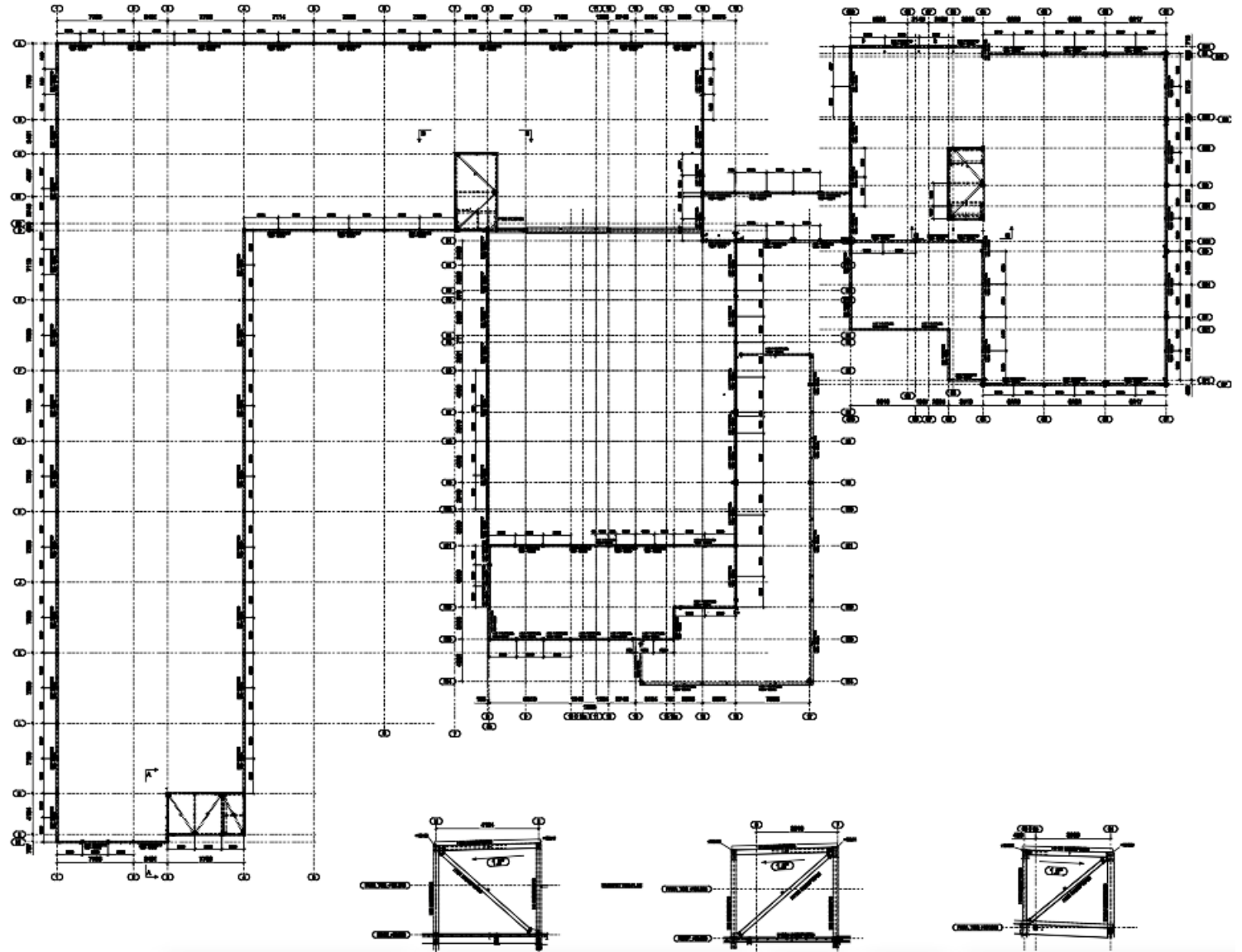
Bonus Point –

What do we receive from the architect that tells us this?



Question –

How many tonnes of steel are in the buildings frame and how many African Elephants would this equate to?



Question –

When did we start our site set-up with the first trades people on site?



Question –

How many working days do we predict on our programme the site will take to complete?



Question –

How many storeys make up Higham Lane North Academy?



Question –

How many pupils can Higham Lane North Academy hold?

